

300 PSIG

SINGLE AND MULTI-PLY STAINLESS STEEL EXPANSION JOINT BELLOWS

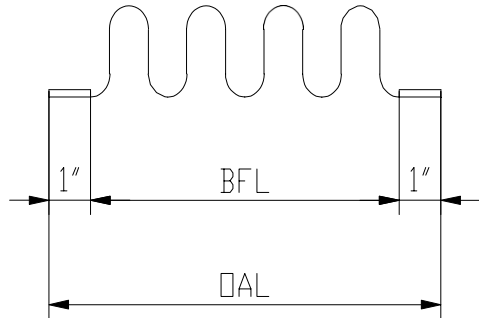
321 S.S. Bellows with Welding Aide

Monel and Inconel available on request.

Notes:

U. S. BELLOWS, INC.®

A DIVISION OF PIPING TECHNOLOGY & PRODUCTS, INC.



1. Pressure Range: Vacuum to 300 PSIG.
2. Temperature Range: -20 F to 800 F.
3. Rated cycle life is 3000 cycles per EJMA for any one tabulated movement.
4. Maximum axial extension movement is 50% of the tabulated axial movement.
5. Rated extension movement is equal to rated axial movement provided the bellows is pre-compressed the amount of design extension.
6. Maximum test pressure: 1.5x design pressure
7. Materials: -- Bellows : ASTM A240-T321SS
-- Welding Aides : ASTM A240-T321SS
8. Flanges or welds ends can be attached to the bellows 1/16" thk (min.) Welding aide.
9. For more details request PT&P's Expansion Joint Catalog.

ND in.	Part Number	Max. Axial Move ment in.	Max. Lateral Movem ent in.	Max. Angul ar Move ment Deg.	B.F.L. in.	Number of Corrugati ons	O.A.L . in.	Weig ht Each lbs.	Axial Spring Rate lbs./in	Lateral Spring Rate lbs./in.	Angular Spring Rate in/lbs/d eg.
3/4	S007300C	0.23	0.10	10	1.63	7	2.38	0.07	1607	1394	13
	L007300C	0.35	0.25	10	2.38	11	3.13	0.09	1025	358	13
1	S010300C	0.29	0.12	10	1.94	8	2.69	0.13	1387	1647	13
	L010300C	0.43	0.27	10	2.75	12	3.50	0.17	1226	487	13
1 1/2	S015300C	0.35	0.13	10	2.38	10	3.13	0.22	2279	2733	13
	L015300C	0.51	0.29	10	4.06	15	4.81	0.29	1518	806	13
2	US-2-8-300S	0.32	0.12	10	3.00	8	5.00	0.60	2511	3022	40
	US-2-12-300L	0.48	0.27	10	4.50	12	6.50	1.00	693	462	14
2 1/2	US-2.5-8-300S	0.77	0.30	10	4.00	8	6.00	2.00	1441	1471	53
	US-2.5-12-300L	0.89	0.52	10	6.00	12	8.00	3.00	961	436	35
3	US-3-8-300S	0.57	0.19	10	4.00	8	6.00	2.00	4230	6345	148
	US-3-12-300L	0.85	0.42	10	6.00	12	8.00	3.00	2820	1880	98
4	US-4-8-300S	0.77	0.20	10	4.00	8	6.00	4.00	2573	6336	147
	US-4-12-300L	1.16	0.45	10	6.00	12	8.00	4.50	1715	1877	98
5	US-5-8-300S	0.74	0.16	10	4.00	8	6.00	4.00	3217	11536	268
	US-5-12-300L	1.11	0.36	10	6.00	12	8.00	4.50	2144	3418	179
6	US-6-8-300S	0.84	0.15	10	4.00	8	6.00	6.30	2809	14080	328
	US-6-12-300L	1.26	0.34	10	6.00	12	8.00	7.50	1872	4172	218
8	US-8-8-300S	0.82	0.11	10	4.00	8	6.00	7.50	3697	30059	700
	US-8-12-300L	1.23	0.26	10	6.00	12	8.00	10.00	2465	8906	466
10	US-10-8-300S	1.52	0.38	10	9.00	8	11.00	23.00	6274	20302	1890
	US-10-12-300L	2.28	0.87	10	13.50	12	15.50	34.00	4183	6015	1260
12	US-12-8-300S	1.57	0.33	10	9.00	8	11.00	40.00	7424	26948	3175
	US-12-12-300L	2.36	0.76	10	13.50	12	15.50	56.00	4950	7985	2116
14	US-14-8-300S	1.55	0.30	10	9.00	8	11.00	45.00	8185	35251	4153
	US-14-12-300L	2.32	0.68	10	13.50	12	15.50	62.00	5457	10445	2769
16	US-16-8-300S	1.53	0.26	10	9.00	8	11.00	51.00	9403	51812	6104
	US-16-12-300L	2.30	0.60	10	13.50	12	15.50	71.00	6268	15352	4069
18	US-18-8-300S	1.53	0.23	9	9.00	8	11.00	55.00	10621	72883	8586
	US-18-12-300L	2.29	0.53	10	13.50	12	15.50	80.00	7081	21595	5724
20	US-20-8-300S	1.51	0.21	8	9.00	8	11.00	60.00	11839	99004	11664
	US-20-12-300L	2.27	0.48	10	13.50	12	15.50	89.00	7893	29335	7776
22	US-22-8-300S	1.40	0.16	6	8.00	8	10.00	60.00	9507	121742	17434
	US-22-12-300L	2.11	0.36	10	12.00	12	14.00	89.00	6338	36072	11623
24	US-24-8-300S	1.60	0.15	6.85	8.00	8	10.00	80.00	10396	156893	14604
	US-24-12-300L	2.41	0.35	10	12.00	12	14.00	112.00	6931	46487	9736

HINGED EXPANSION JOINT



REV.1-4/23/99

MULTI-PLY UNIVERSAL EXPANSION JOINT



177

113" DIAMETER UNIVERSAL EXPANSION JOINT RATED AT 20 PSI



300psig.wk4-12/8/94